

*Building your Dreams!*



# HAZEL

(FLAT AND LOOK OUT LOTS ONLY)

4 Bedroom  
Multi-Level

**2397 SQ. FT.**  
INCLUDES 42 SQ. FT. OPEN TO ABOVE

Elevation A

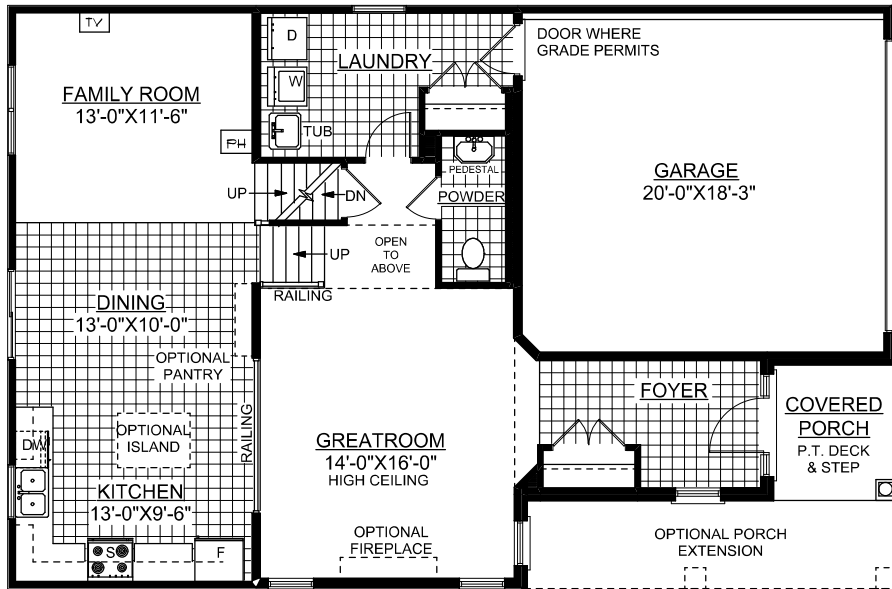
Elevation B

THIS IS AN ARTIST'S DEPICTION OF THE HOME AND MAY HAVE UPGRADES THAT VARY FROM ACTUAL DRAWINGS. PLANS AND SPECIFICATIONS ARE APPROXIMATE AND SUBJECT TO CHANGE WITHOUT NOTICE.

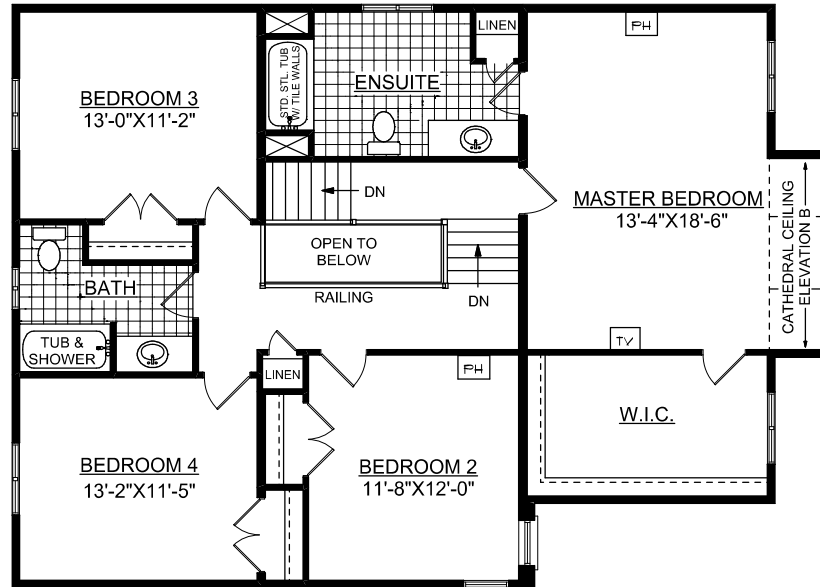
[www.eastforesthomes.com](http://www.eastforesthomes.com)



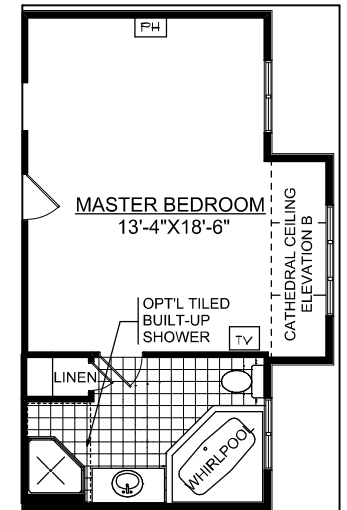
*Building your*



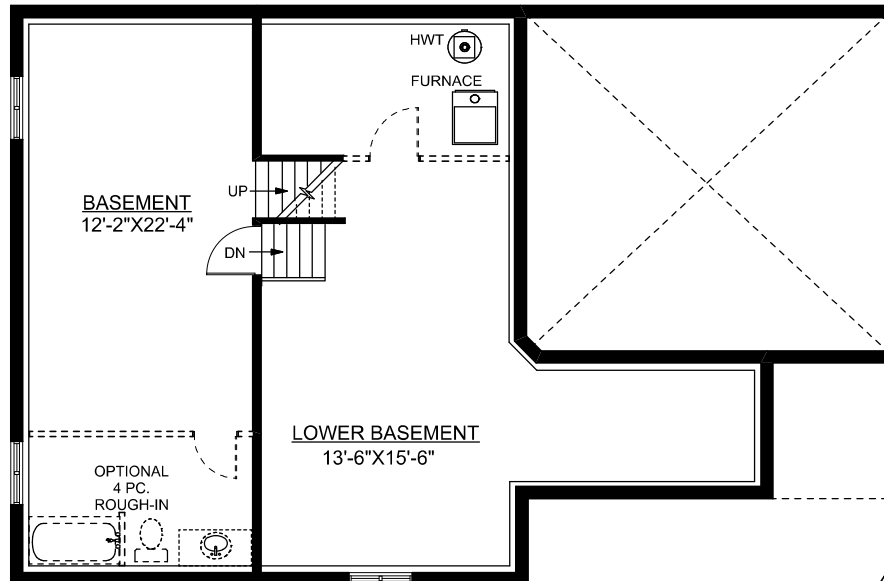
**MAIN FLOOR PLAN**



**UPPER FLOOR PLAN**



**OPTIONAL LUXURY ENSUITE PLAN**



**BASEMENT PLAN**

**'HAZEL'**  
2355 SQ.FT.

BRICK FRONT MAIN FLOOR

BRICK MAIN FLOOR COMPLETE

(EXCLUDING ABOVE OPENINGS)  
\* IF BRICK IS SELECTED IN LIEU OF VINYL SIDING,  
ROOM SIZES WILL BE ADJUSTED.

NAME \_\_\_\_\_

LOT NO. \_\_\_\_\_

STREET \_\_\_\_\_

JULY 30, 2008

Specifications and plans are subject to change without notice. E.&O.E.. Actual usable floor space may vary from stated floor area. All sizes approximate. Illustrations depicted are an artists concept of the completed building only. Illustrations may show optional features which may not be included in the base price. Builder reserves the right to alter or reverse plans. Bulkheads and boxing may be required. Ask your sales representative for more information. Ceiling heights vary from plan to plan. Stair configuration will change with any change to ceiling heights. Do not scale drawing.

