

28'



Elevation B

# Hickory II

1401 sq.ft.

Including 65 sq.ft open to above

3 Bedroom | 2-Storey



Building a Better Tomorrow.®

This is an artist's depiction of the home and may have upgrades that vary from actual drawings. Plans and specifications are approximate and subject to change without notice.



**HICKORY II 'B'**  
 TOTAL SQ. FT. = 1336  
 (O.T.A. SQ. FT. = 65)

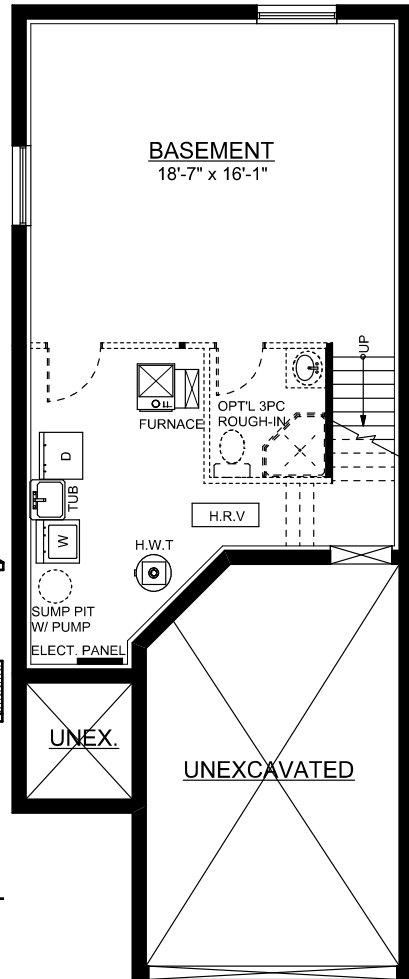


**HICKORY II 'A'**  
 TOTAL SQ. FT. = 1336  
 (O.T.A. SQ. FT. = 65)

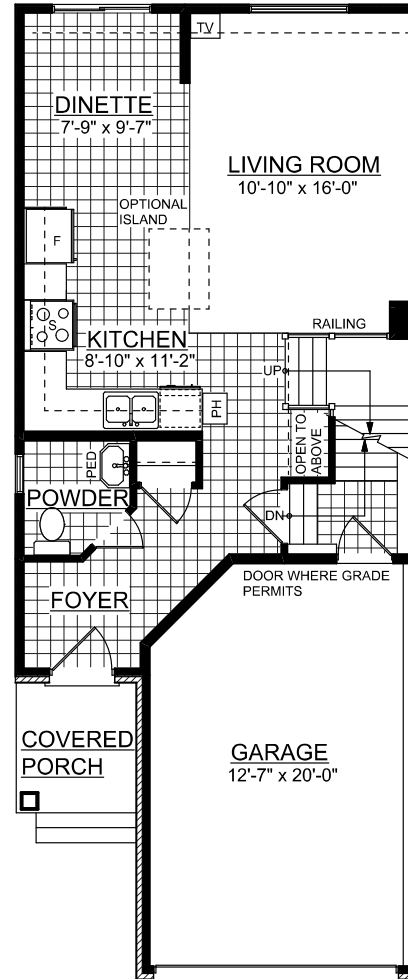
NAME \_\_\_\_\_  BRICK FRONT MAIN FLOOR  
 LOT No. \_\_\_\_\_  BRICK MAIN FLOOR COMPLETE  
 STREET \_\_\_\_\_ (EXCLUDING ABOVE OPENINGS)  
 \*IF BRICK IS SELETED IN LIEU OF VINYL SIDING, ROOM SIZES WILL BE ADJUSTED

APRIL 15, 2009

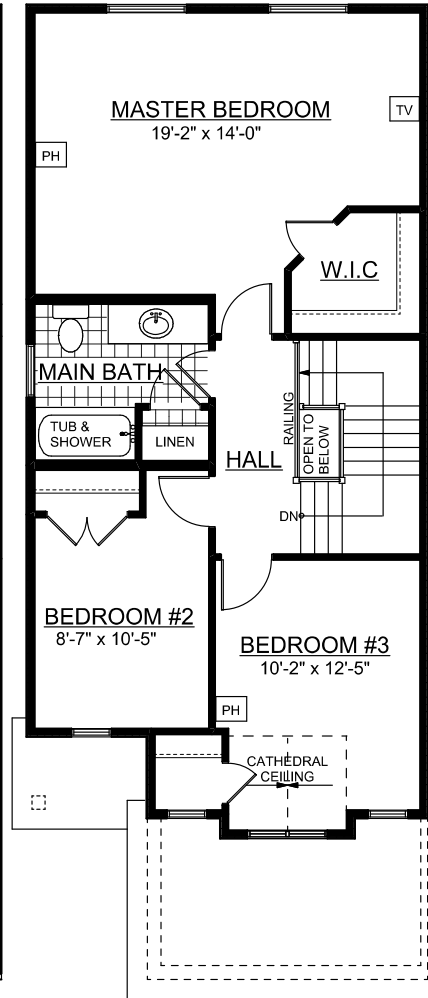
Specifications and plans are subject to change without notice. E. & O.E.  
 Actual usable floor space may vary from stated floor area.  
 All sizes are approximate.  
 Illustrations depicted are an artists concept of the completed building only.  
 Illustrations may show optional features which may not be included in the base price.  
 Builder reserves the right to alter or reverse plans.  
 Bulkheads and boxing may be required.  
 Ask your sales representative for more information.  
 Ceiling heights vary from plan to plan.  
 Stair configuration will change with any change to ceiling heights.  
 Mechanical equipment locations may change as per site conditions.  
 Do not scale drawings.



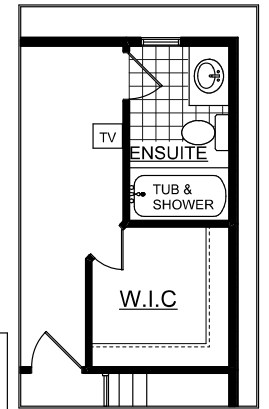
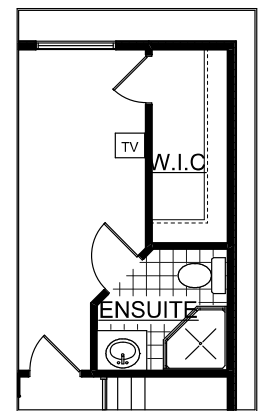
**BASEMENT FLOOR PLAN**



**MAIN FLOOR PLAN**  
 SQ. FT. = 607



**SECOND FLOOR PLAN**  
 SQ. FT. = 729 (O.T.A. SQ. FT. = 65)



**OPTIONAL ENSUITE PLANS**

**EASTFOREST HOMES LTD.**  
 KITCHENER, ONTARIO (519) 742-2846  
**28' PRODUCT**