

Town



5 Unit Block with Stone & Balconies



6 Unit Block – Standard

# Hollyhock

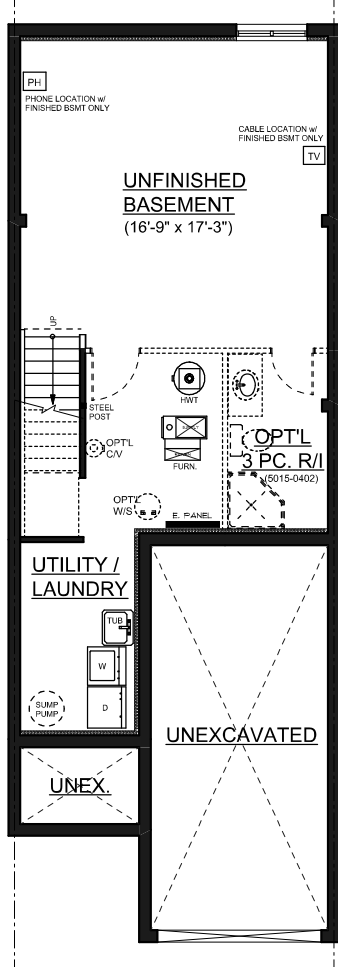
1423 sq.ft.

Including 44 sq.ft open to above  
3 Bedroom | 2-Storey

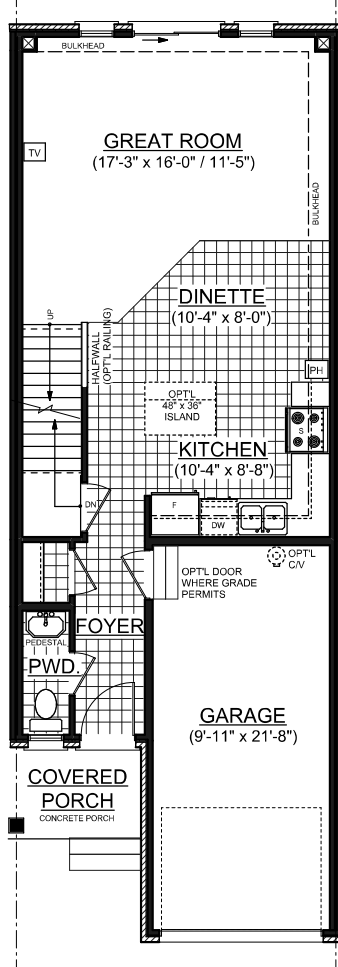


Building a Better Tomorrow.®

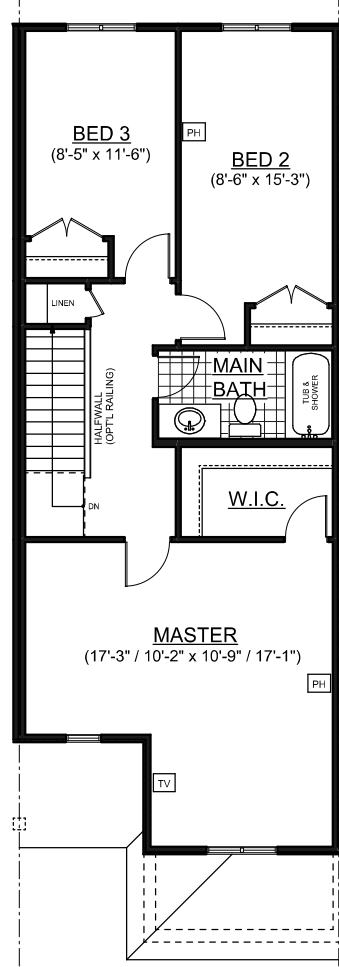
This is an artist's depiction of the home and may have upgrades that vary from actual drawings. Plans and specifications are approximate and subject to change without notice.



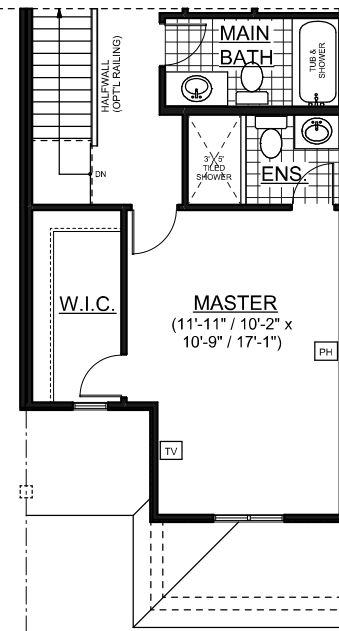
**BASEMENT FLOOR PLAN**



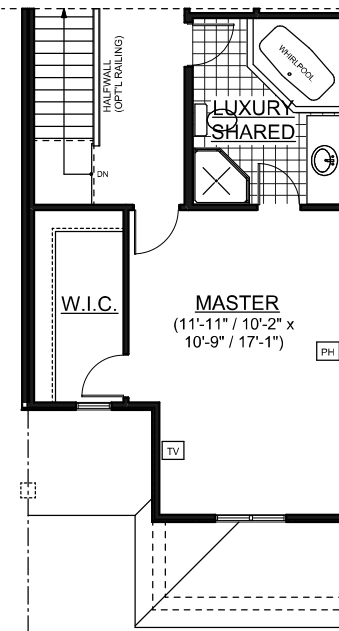
**MAIN FLOOR PLAN**



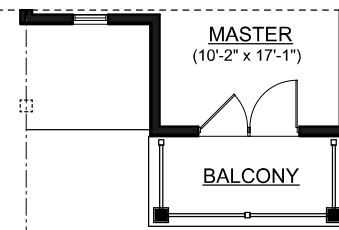
**SECOND FLOOR PLAN**



**OPTIONAL ENSUITE**  
(5015-0099)



**OPTIONAL SHARED LUXURY ENSUITE**  
(5015-0009)



**SECOND FLOOR PLAN w/ BALCONY**

Specifications and plans are subject to change without notice. E. & O.E..  
 Actual usable floor space may vary from stated floor area.  
 All sizes are approximate.  
 Illustrations depicted are an artists concept of the completed building only.  
 Illustrations may show optional features which may not be included in the base price.  
 Builder reserves the right to alter or reverse plans.  
 Bulkheads and boxing may be required.  
 Ask your sales representative for more information.  
 Ceiling heights vary from plan to plan.  
 Stair configuration will change with any change to ceiling heights.  
 Mechanical equipment locations may change as per site conditions.  
 Do not scale drawings.

NAME \_\_\_\_\_  
 LOT No. \_\_\_\_\_  
 STREET \_\_\_\_\_

# HOLLYHOCK (Town)

SQ. FT. = 1379

NOVEMBER 25, 2011

KITCHENER, ONTARIO (519) 742-2846  
**18' PRODUCT**